

Uniscale glass measuring rods

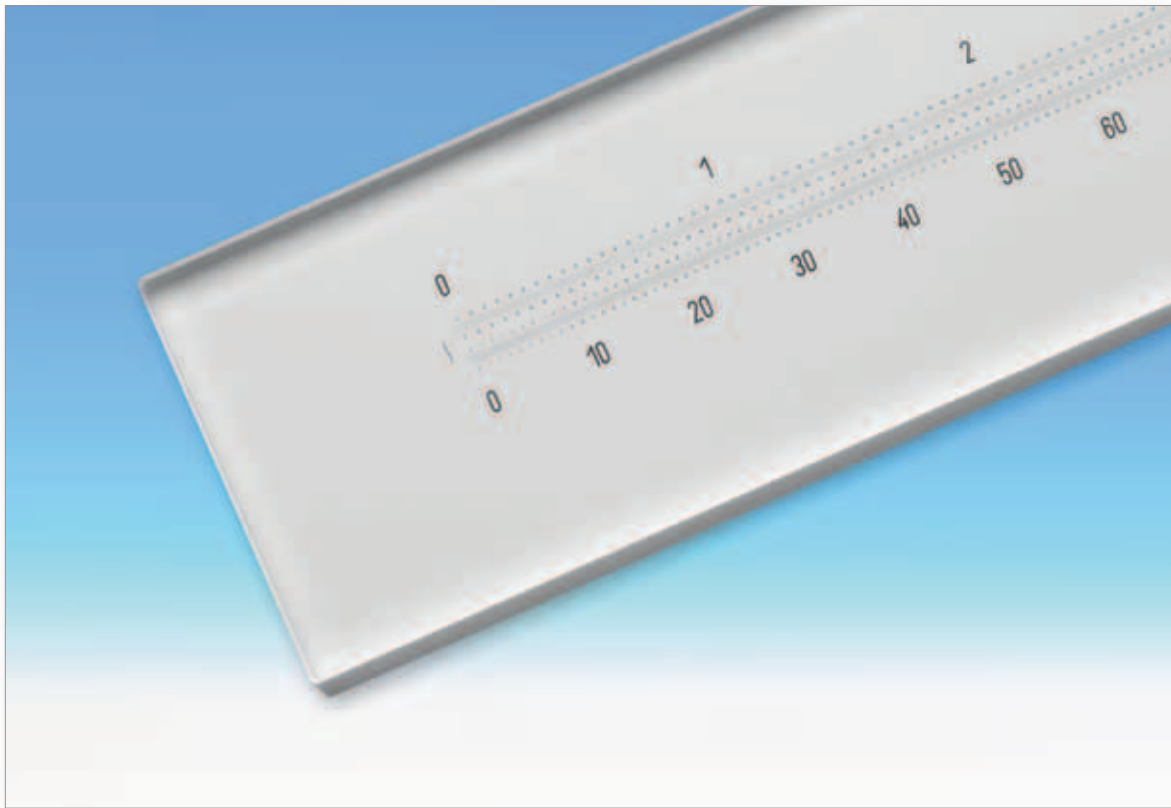


Table of contents

<i>Specifications</i>	2
-----------------------------	---

Uniscale glass measuring rods



The uniscale series of precision glass measuring rods have graduations and numbers consisting of vapour-coated hard chrome. One scale each in metric and inch increments. The smallest increment on the inch scale is 0.005". The minimum increments on the metric scale are 0.1 millimetre. These uniscale glass measuring rods are identical with the rods in the chrome scale and micro-chrome scale series however without magnifier, handle, white cover strip, etc. These rods are suitable for installation in self-made mounts. These valuable precision glass measuring rods are delivered in a stable wooden case to protect them from damage. Uniscale

rods are available in lengths of 100, 200, 300, 500, 800, 1000, 1400, 1600 and 2000 millimetres. Special lengths available on request. These glass measuring rods have the advantage that their expansion is minimal when heated. Temperature variations therefore have hardly any effect when using uniscale rods.

Specifications

- Upper measuring scale: Increments = 0.005"
labelling (small) 0 .05 .10 .. (inches)
labelling (large) 0 1.0 2.0 ... (inches)
- Lower measuring scale: Increments = 0.1 mm
labelling (small) 0 .1 .2 .. (mm)
labelling (large) 0 10 20 ... (mm)
- The graduations and numbers are vapour-coated with hard chrome on the glass rods are high resolution and absolutely scratch resistant. The graduations have a thickness of 0.010 mm.
- Increment accuracy in compliance with DIN 864:
 $\pm (0.003 \text{ mm} + 3L / 1'000'000)$
Example: L = 500 mm, graduation error $\leq 0.0045 \text{ mm}$ (dimensions bases on 20°C)
- Thermal coefficient of expansion: $9 \times 10^{-6} / ^\circ\text{C}$
- Refraction index = 1.5195
- Material = float glass (selected)
- Scaling not centred / centred on glass element! (multiple use)
- Length of glass elements = nominal length in inches x 25.4 mm / inches + 49 mm
- Width of glass element = 39 mm
- Thickness of glass element = 6 mm
- Available in lengths of (measuring range on double scale):
 - 100 mm / 4" = overall length 100.5 mm ($\pm 1 \text{ mm}$)
 - 200 mm / 8" = overall length 220.0 mm ($\pm 1 \text{ mm}$)
 - 300 mm / 12" = overall length 353.8 mm ($\pm 1 \text{ mm}$)
 - 500 mm / 20" = overall length 557.0 mm ($\pm 1 \text{ mm}$)
 - 800 mm / 32" = overall length 861.8 mm ($\pm 1 \text{ mm}$)
 - 1,000 mm / 40" = overall length 1,065.0 mm ($\pm 1 \text{ mm}$)
 - 1,400 mm / 56" = overall length 1,471.4 mm ($\pm 1 \text{ mm}$)
 - 1,600 mm / 64" = overall length 1,674.6 mm ($\pm 1 \text{ mm}$)
 - 2,000 mm / 80" = overall length 2,081.0 mm ($\pm 1 \text{ mm}$)

Order no.	Description	Price excl. VAT.
UNI-100	Chrome glass measuring rod incl. box, 100 mm, with 0.1mm and 0.005" increments	
UNI-200	Chrome glass measuring rod incl. box, 200 mm, with 0.1mm and 0.005" increments	
UNI-300	Chrome glass measuring rod incl. box, 300 mm, with 0.1mm and 0.005" increments	
UNI-500	Chrome glass measuring rod incl. box, 500 mm, with 0.1mm and 0.005" increments	
UNI-800	Chrome glass measuring rod incl. box, 800 mm, with 0.1mm and 0.005" increments	
UNI-1000	Chrome glass measuring rod incl. box, 1000 mm, with 0.1mm and 0.005" increments	
UNI-1400	Chrome glass measuring rod incl. box, 1400 mm, with 0.1mm and 0.005" increments	
UNI-1600	Chrome glass measuring rod incl. box, 1600 mm, with 0.1mm and 0.005" increments	
UNI-2000	Chrome glass measuring rod incl. box, 2000 mm, with 0.1mm and 0.005" increments	